

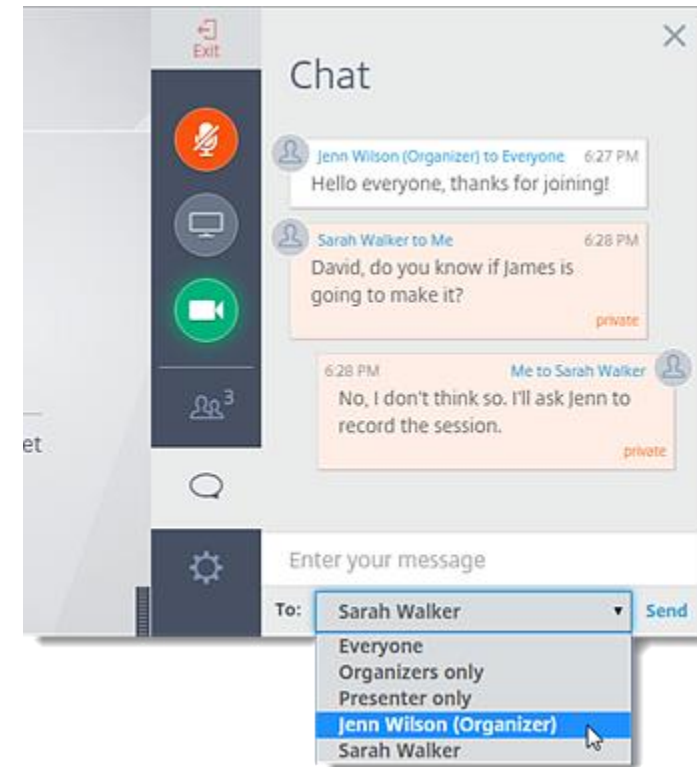


Industry Advisory Committee

AGRICULTURE, FOOD, AND NATURAL RESOURCES
AUGUST 30, 2018

GoToWebinar Functionality

- Toolbar with orange arrow to expand or collapse
- Muting your microphone
- Raise your hand feature
- Chat and question box – drop down menu to respond to presenter or entire group



August Webinar Agenda

1. Committee Member Introductions
2. Roles and Responsibilities
3. Timeline
4. Programs of Study

Industry Advisory Committee Introductions

Agriculture, Food and Natural Resources Advisory Committee Members		
Name	Position	Email Address
Mark Bosher	Waxahachie ISD	mbosher@wisd.org
Kerri Bowles	ESC Region 8	kbowles@reg8.net
Rick Bracy	Grapevine-Colleyville ISD	rick.bracy@gcisd.net
Dr. Scott Burris	Texas Tech University	scott.burris@ttu.edu
Tracey Cortez	Instructor, Austin ISD	tracey.cortez@austinisd.org
Danny Hunter	Texas Department of Agriculture	dan.hunter@texasagriculture.gov
Austin Large	Texas FFA Association	austin@texasffa.org
Barney McClure	VATAT	barney@vatat.org
Amber McNew	Concho Valley Workforce Development Board	amcnew@cvworkforce.org

Industry Advisory Committee Introductions

Agriculture, Food and Natural Resources Advisory Committee Members		
Industry Advisory Committee Members		
Name	Position	Email Address
Dr. Dwayne Pavelock	Sam Houston State University	AGR_DXP@SHSU.EDU
Dr. Jeff Ripley	Texas Agrilife Extension Service	j-ripley@tamu.edu
Whit Weems	Texas Farm Bureau	wweems@txfb.org
Sue Witt	Glimer ISD	witts@gilmerisd.org

Meeting Norms

- Being student focused
- Circle of trust
- Assume positive intent
- Speak freely
- Balance urgency with patience
- Monitor your airtime

Roles and Responsibilities

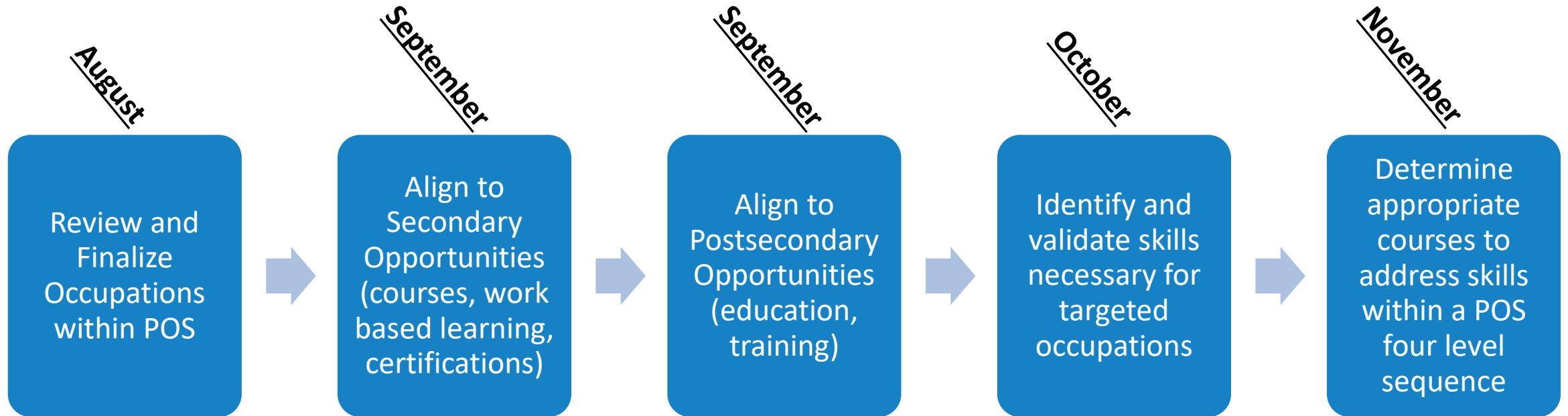
Committee Members

- Review occupations and skills related to Programs of Study
- Determine alignment of skills, secondary opportunities, and postsecondary opportunities
- Create course sequencing options for implementation of Programs of Study

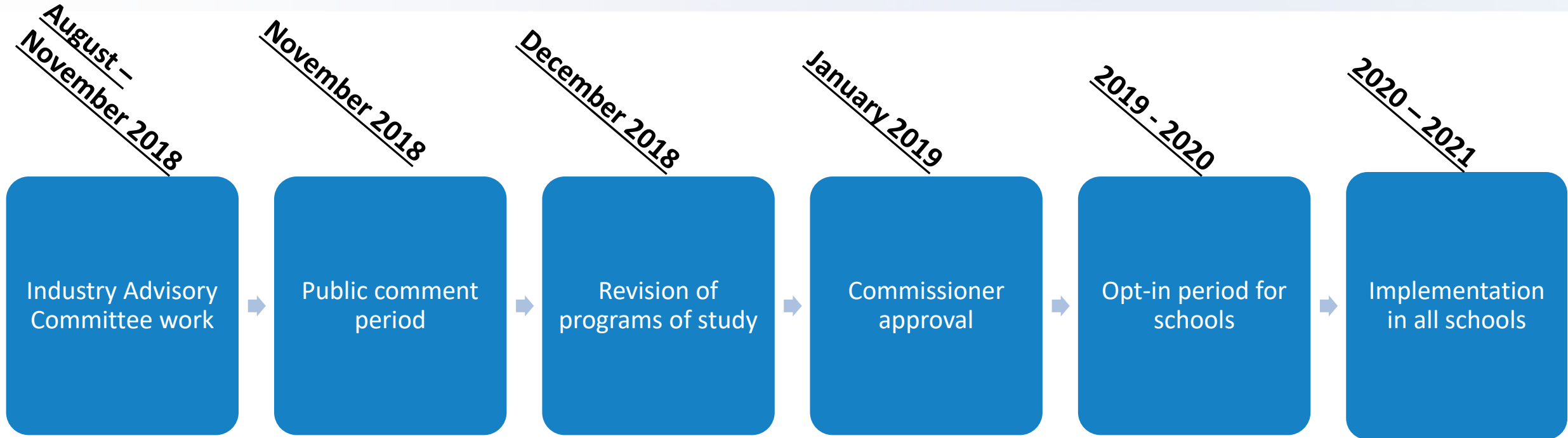
TEA Staff

- Collection of labor market data
- Identify proposed Programs of Study from labor market data
- Utilize committee input to define Programs of Study
- Communicate information regarding Programs of Study to the field

Committee Timeline



Project Timeline



Program of Study Methodology Data

EMSI*

Labor Market Information Expert

18B data points from dozens of government data sources, updated quarterly.

Hundreds of millions of online job openings

>100M million U.S. individuals' employment and education profiles

Over 40M individual compensation observations

Custom Crosswalks

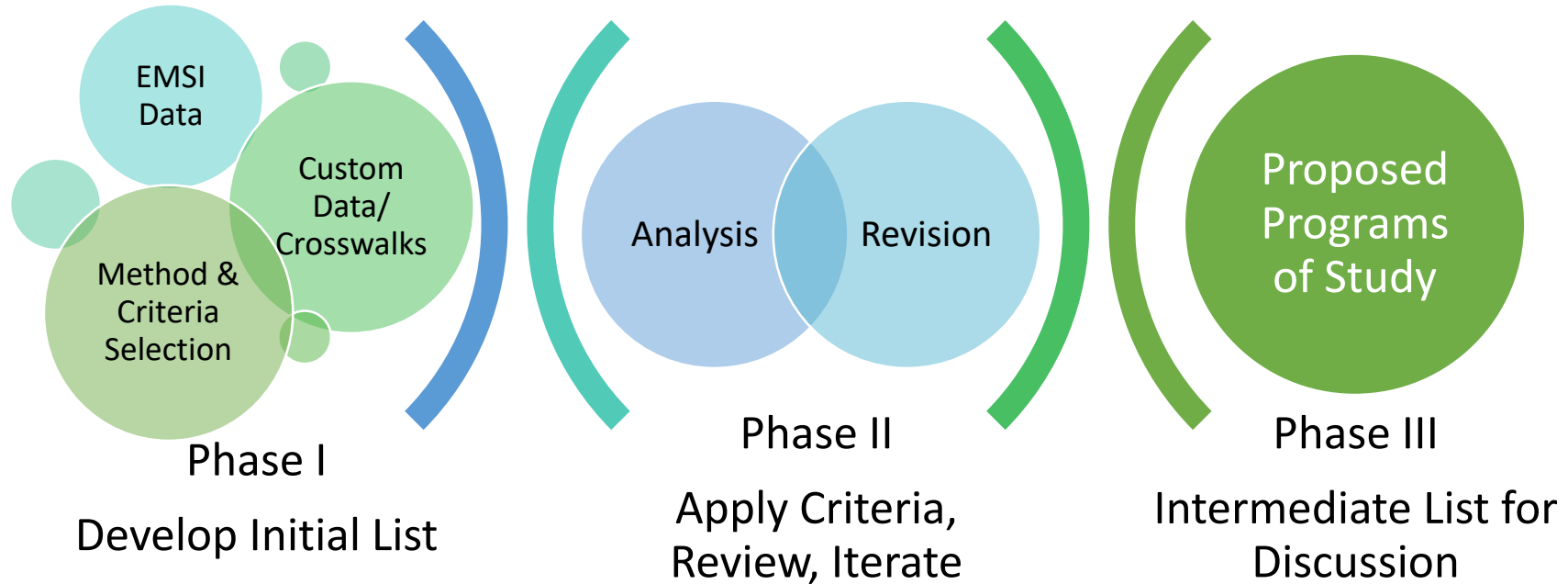
Methodology Analysis and Recommendation

Texas postsecondary (IPEDS) completers

Texas LWDA Data

* EMSI information can be found at: <https://www.economicmodeling.com/data/>

Program of Study Methodology Overview



Job Growth: 17% Median Salary: \$35,339 Annual Openings: 500

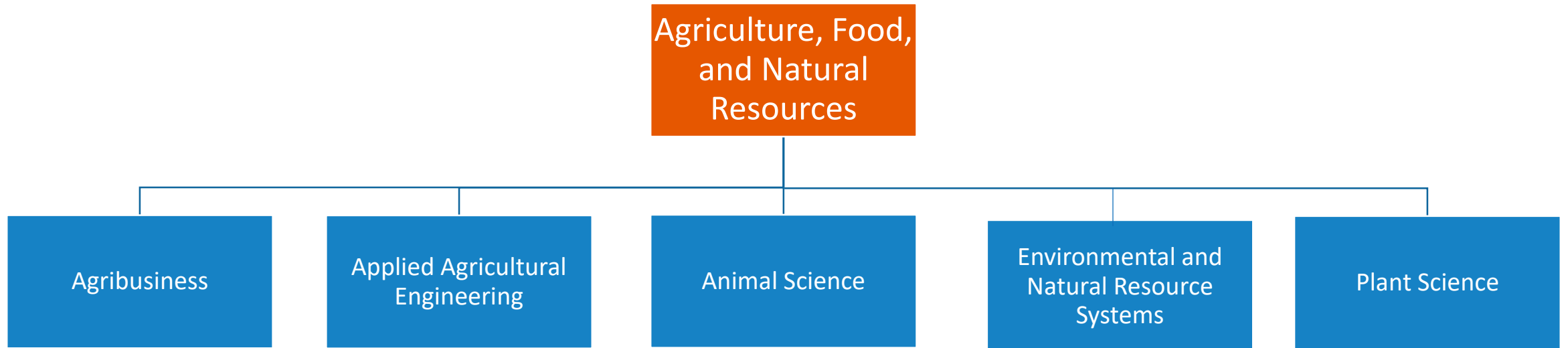
What is a Program of Study?

A Program of Study should include:

- **A sequence of non-duplicative secondary courses supporting a defined area of careers and embedding academic and technical content**
- **High-school work-based learning**
- **Industry Based Certifications needed to obtain careers**
- **Postsecondary education and training opportunities tied to career entry points**
- **Multiple education and training exit points along the career progression**

New programs of study are essential for meeting federal requirements for Perkins and ensuring CTE concentrators are prepared to earn a valued credential.

Agriculture, Food and Natural Resources Programs of Study



Programs of Study & Related Occupations

Agribusiness

Chief Executives

Purchasing Managers

Advertising and Promotions Managers

Natural Sciences Managers

Sales Managers

Management Analysts

Administrative Services Managers

Accountants and Auditors

Computer and Information Systems Managers

Operations Research Analysts

Industrial Production Managers

Managers, All Other

Applied Agricultural Engineering

Operating Engineers and Other Construction Equipment Operators

Dredge Operators

Production Workers, All Other

Programs of Study & Related Occupations

Animal Science

Food Scientists and Technologists	Dietetic Technicians
Microbiologists	Veterinary Technologists and Technicians
Zoologists and Wildlife Biologists	Veterinarians
Conservation Scientists	Epidemiologists
Foresters	Life Scientists, All Other
Veterinary Assistants and Laboratory Animal Caretakers	

Programs of Study & Related Occupations

Environmental and Natural Resource Systems

Environmental Engineers	Forest and Conservation Technicians
Natural Sciences Managers	Fish and Game Wardens
Environmental Engineering Technicians	Hunters and Trappers
Zoologists and Wildlife Biologists	Forest and Conservation Workers
Environmental Science and Protection Technicians, Including Health	Water and Wastewater Treatment Plant and System Operators
Foresters	

Programs of Study & Related Occupations

Plant Science

First-Line Supervisors of Landscaping, Lawn Service, and Groundskeeping Workers

Landscaping and Groundskeeping Workers

Tree Trimmers and Pruners

Grounds Maintenance Workers, All Other

Agriculture, Food and Natural Resources Programs of Study

Questions for Discussion

- Naming of program of study /Student engagement
- Misaligned occupations
- Missing occupations
- Other issues

**Agriculture, Food and
Natural Resources**

Agribusiness

Applied
Agricultural
Engineering

Animal Science

Environmental
and Natural
Resource Systems

Plant Science

Next Steps

- Postsecondary programs:
Opportunities for students to continue their education and training beyond high school. This includes Level I and II certificates, apprenticeships, associate, and bachelor's degree programs.

- Work based learning:
Work-based learning is a continuum of intentional activities and experiences designed to expand the boundaries of the classroom and prepare students for future career opportunities.

- Work-based learning provides opportunities for students to:
 - apply knowledge learned in the classroom;
 - explore potential career options;
 - engage with business and industry practitioners; and
 - develop essential 21st century skills.

Next Steps

- Review revisions to programs of study
- Prepare for Job Profile validation
- Web meeting: October 4, 2018 at 1:30 pm CST
- In-person meeting: November 9, 2018 in Austin (details forthcoming)

For more information, please contact:

Amanda Brantley
amanda.brantley@tea.texas.gov
512-475-4965

Ryan Merritt, Statewide CTE Director
Ryan.Merritt@tea.texas.gov